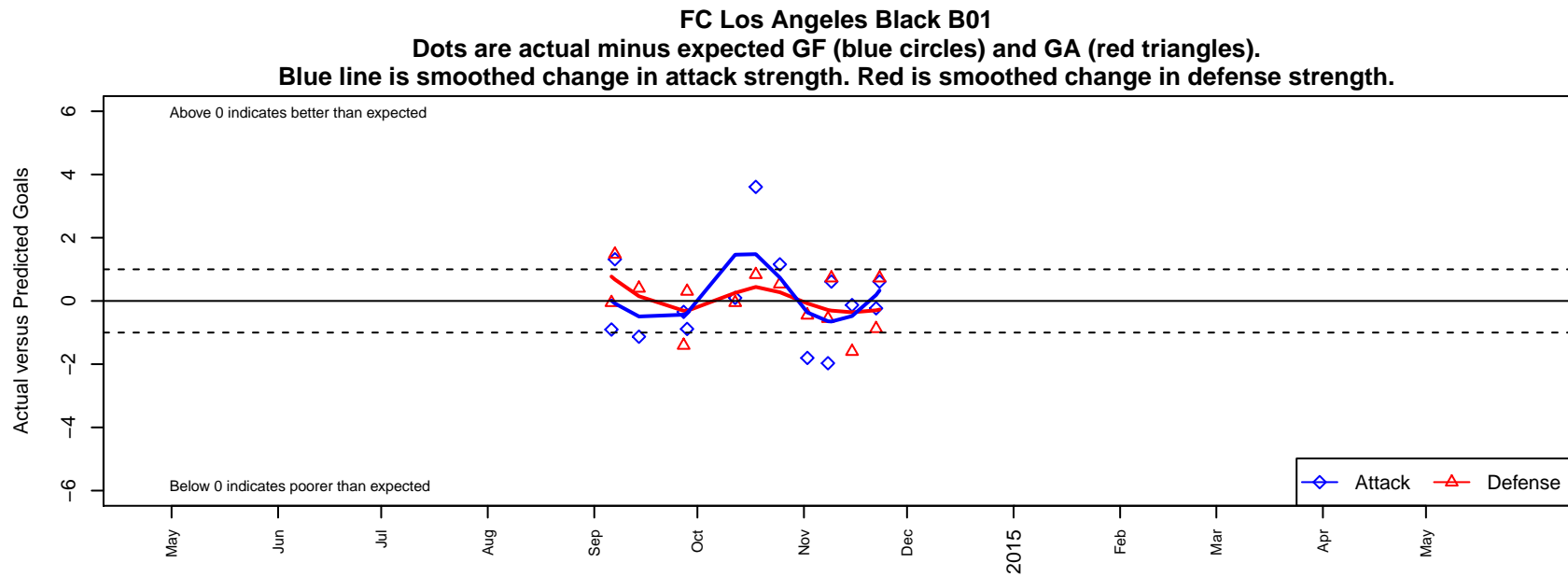


FC Los Angeles Black B01

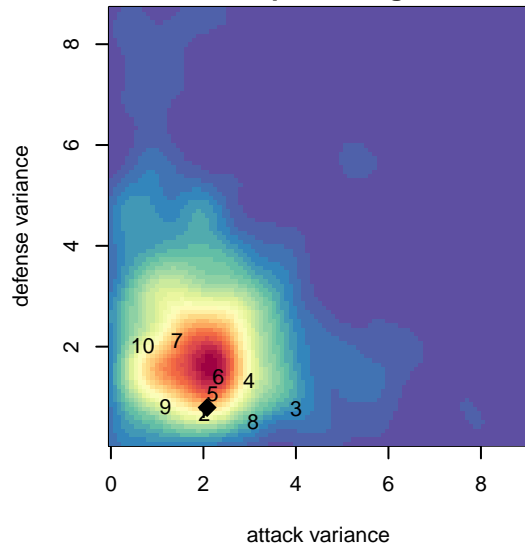
Los Angeles, CAS
B01 total strength=1478
attack=11.71 defense=9.37
fall league = SCDL FI1 U13

alt names used:
FC Los Angeles B01 Black

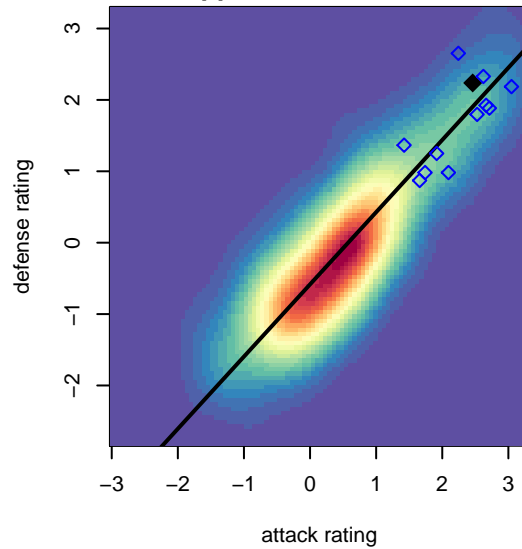
Venues played:
2014 SCDL FI1 U13



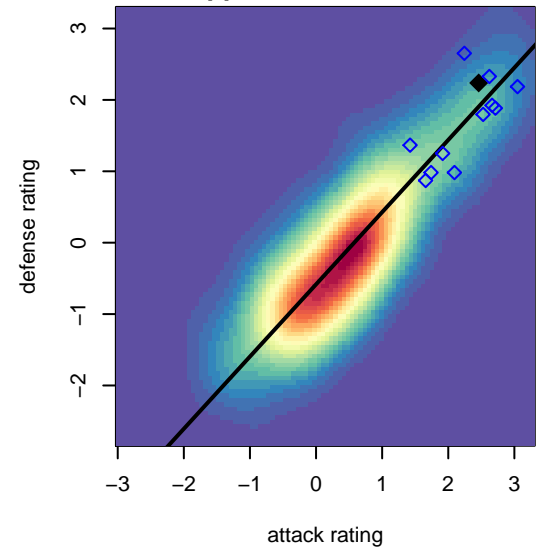
**attack and defense variance (black dot)
relative to other teams
and top 10 in region**



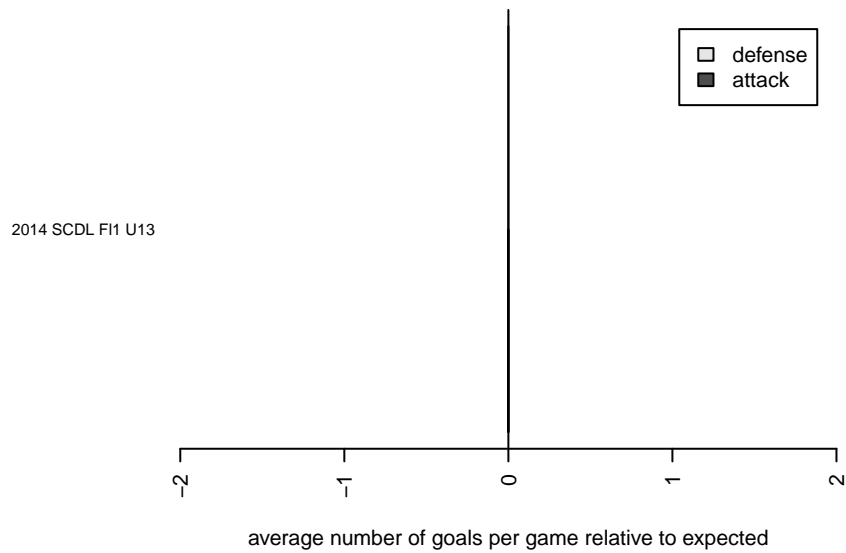
**attack and defense rating
relative to others at age
and all opponents in last 13 months**



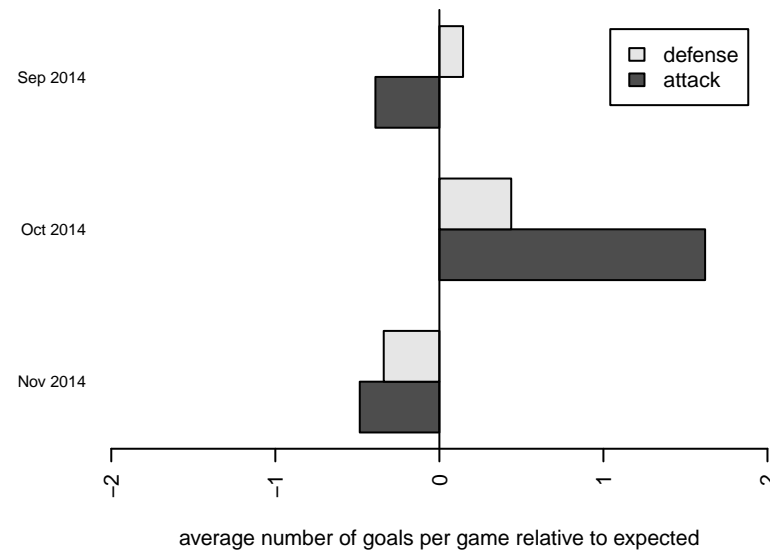
**attack and defense rating
relative to others at age
and all opponents in last 13 months**



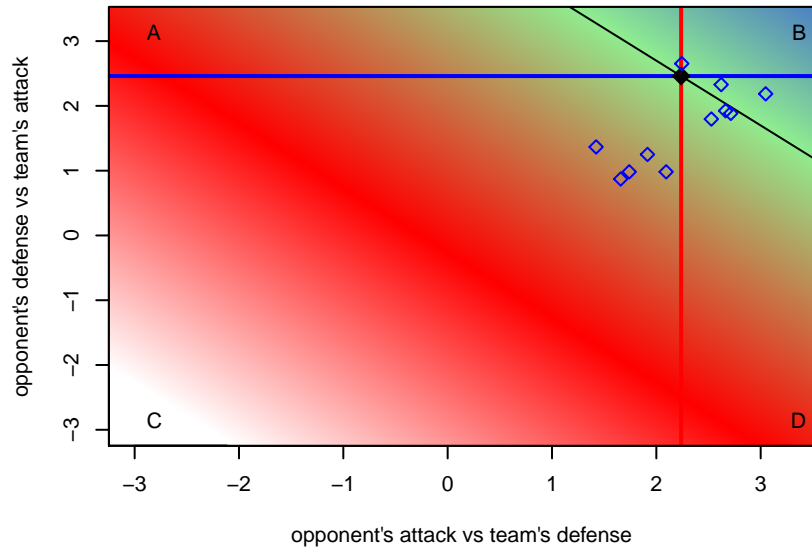
Performance relative to 13 month average



Performance relative to 13 month average



Distribution of opponents
 Red = Lose zone, Blue = Win zone, Green = Even
 Black line separates win/lose zones



lot. A=Neither has attack advantage, B=Opponent has both attack and defense advantage, C=Opponent has both attack and defense disadvantage, D=Both have

date	home		away		venue	pred.home	pred.away
2014-11-23	Manhattan Beach Sand and Surf Black B01	0	FC Los Angeles Black B01	4	2014 SCDL FI1 U13	0.72	3.39
2014-11-22	FC Los Angeles Black B01	1	FC Golden State 02 PDA B01	3	2014 SCDL FI1 U13	1.23	2.12
2014-11-15	LA Galaxy Academy North B01	3	FC Los Angeles Black B01	1	2014 SCDL FI1 U13	1.40	1.13
2014-11-09	FC Los Angeles Black B01	4	Manhattan Beach Sand and Surf Black B01	0	2014 SCDL FI1 U13	3.39	0.72
2014-11-08	LA Galaxy South Bay Navy B01	1	FC Los Angeles Black B01	1	2014 SCDL FI1 U13	0.44	2.97
2014-11-02	FC Los Angeles Black B01	0	LA Galaxy South Bay Gold B01	2	2014 SCDL FI1 U13	1.80	1.55
2014-10-25	Downtown SC B01	0	FC Los Angeles Black B01	6	2014 SCDL FI1 U13	0.53	4.84
2014-10-18	Slammers FC HB B01	0	FC Los Angeles Black B01	8	2014 SCDL FI1 U13	0.83	4.39
2014-10-12	Pateadores LA B01	1	FC Los Angeles Black B01	1	2014 SCDL FI1 U13	0.95	0.90
2014-09-28	Real So Cal White B01	1	FC Los Angeles Black B01	1	2014 SCDL FI1 U13	1.30	1.89
2014-09-27	FC Los Angeles Black B01	4	LA Galaxy Bakersfield B01	2	2014 SCDL FI1 U13	4.35	0.59
2014-09-14	LA Galaxy Academy North B01	1	FC Los Angeles Black B01	0	2014 SCDL FI1 U13	1.40	1.13
2014-09-07	FC Los Angeles Black B01	3	LA Galaxy Academy South B01	0	2014 SCDL FI1 U13	1.68	1.48
2014-09-06	FC Los Angeles Black B01	0	Pateadores LA B01	1	2014 SCDL FI1 U13	0.90	0.95